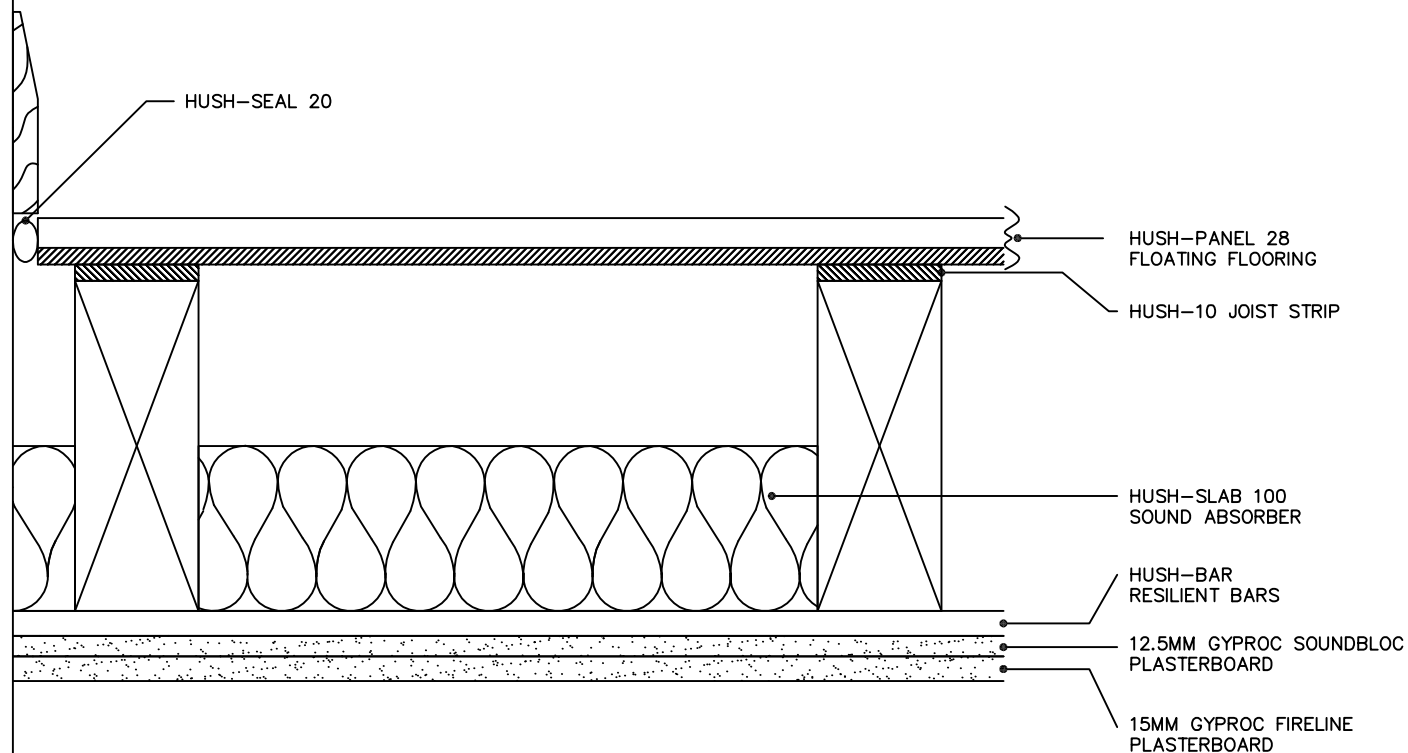


TYPICAL TEST RESULT

IMPACT L_nTW = 56dB AIRBORNE D_nTW = 54dB D_nTW + CTR = 45dB
RESULTS BASED ON 200MM JOISTS AT 450MM CENTRES

HUSH-PANEL 28 LAID OVER HUSH-10 JOIST STRIPS, SECURED TO JOIST TOPS AS PER MANUFACTURERS INSTRUCTIONS, WITH ALL PERIMETERS SEALED USING HUSH-SEAL 20.

HUSH-SLAB 100 FITTED BETWEEN JOISTS, THEN HUSH-BAR RESILIENT BARS SCREW FIXED TO THE UNDERSIDE OF JOISTS AT 600MM CENTRES ON TO WHICH IS SECURED TWO LAYERS OF HIGH DENSITY PLASTERBOARD, 15MM FIRELINE AND 12.5MM SOUNDBLOC SEAL ALL PERIMETERS PRIOR TO SKIMMING. PROVIDES A 1 HOUR FIRE RESISTANCE AT CEILING LEVEL.



HUSH (UK) LTD
HUSH-SYSTEM 2003
TYPE HD1012